

Set of Silai white aluminium side tables with beige porcelain top.

Product Features

Silai side table set consisting of high table (79x79x45 cm) + low table (71x59x40 cm). White aluminium structure with beige porcelain top.



ALUMINIO

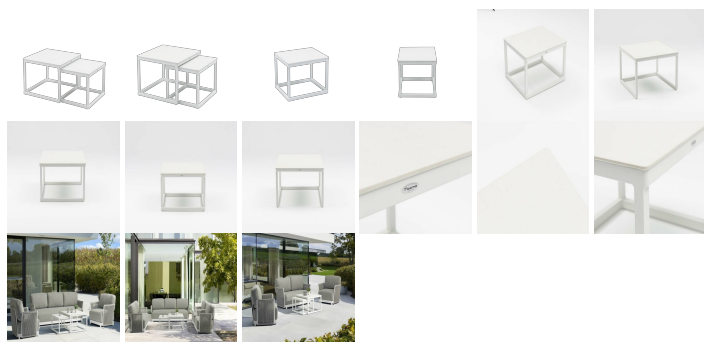
BLANCO MA01



TOP

BEIGE MP03

Product Gallery



Product Specification

REFERENCE : 100302070

COLLECTION : SILAI

MATERIAL : ALUMINIUM AND PORCELAIN

MAIN COLOR STRUCTURE : WHITE

COLOUR DETAIL STRUCTURE : BEIGE

ASSEMBLY REQUIRED : NO

NET WEIGHT : 12,8/9,6

WIDTH : 70/79

DEPTH : 60/79

THICKNESS TOP : 0,7

TOTAL HIGH : 40/45

FREE STOP : 39/44,5

RECOMMENDED OPTIONAL COVER : 100901028