

# Dining chair Irvine aluminium white rope taupe beige cushion beige cushion



## Product Features

Irvine dining armchair. White aluminium structure combined with nautical rope (10mm) taupe colour. Seat cushion (5cm) and back cushion (12cm) beige colour.

Assembly required.



ALUMINIO

BLANCO MA01



CUERDA

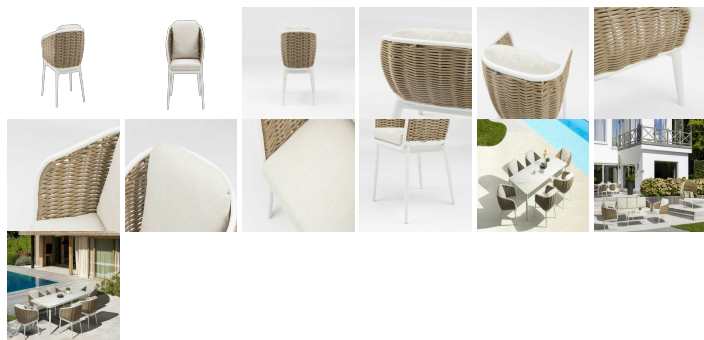
TAUPE MC21



TAPIZADO

BEIGE MF42

## Product Gallery



## Product Specification

REFERENCE : 100102033

COLLECTION : IRVINE

MATERIAL : ALUMINIUM ROPE

MAIN COLOR STRUCTURE : WHITE

MAIN TEXTILE COLOR : BEIGE

COLOUR DETAIL STRUCTURE : TAUPE

ASSEMBLY REQUIRED : SI

NET WEIGHT : 8,2

WIDTH : 60

DEPTH : 63

ARM HEIGHT : 71/80

WIDE SEAT : 47/44

SEAT FUND : 38

STRUCTURE HEIGHT : 81,5

TOTAL HIGH : 86

SEATED HEIGHT : 46

OPTIONAL INDIVIDUAL COVER : 100901016