

# Adin dining table 160 x 90 cm, aluminium and anthracite glass



## Product Features

Mesa de comedor Adin 160\*90cm. Estructura en aluminio lacado en antracita. Cristal templado con grosor de 8mm en color antracita mate. Fácil montaje.

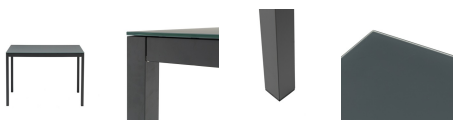


ALUMINIO  
ANTRACITA  
MA02



TOP  
CRISTAL  
ANTRACITA  
MG04

## Product Gallery



## Product Specification

REFERENCE : 100301022  
COLLECTION : ADIN  
MATERIAL : ALUMINIUM GLASS  
MAIN COLOR STRUCTURE : ANTHRACITE  
COLOUR DETAIL STRUCTURE : ANTHRACITE  
OTHER DETAILS 1 : ANTI-FINGERMARK GLASS  
ASSEMBLY REQUIRED : SI  
NET WEIGHT : 35.8  
WIDTH : 160  
DEPTH : 90  
THICKNESS TOP : 0.8  
FREE WIDTH : 150  
FREE HEIGHT : 69  
TOTAL HIGH : 74